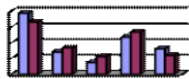


Texas A&M University

Admission Test Score Fall 2017



Prepared by
Data and Research Services

**Average and Median SAT by Gender by Ethnicity
First-Time In College Full-Time (FTFT)
College Station and Galveston**

College Total

Fall 2017 SAT		SAT Composite			SAT Evidence-Based Reading and Writing		SAT Math		SAT Essay Total	
		#	Mean	Median	Mean	Median	Mean	Median	Mean	Median
Gender	Total	5332	1253	1260	621	620	632	630	15	16
	Female	2685	1219	1220	611	610	608	600	16	16
	Male	2647	1288	1300	631	640	656	660	15	16
Ethnicity	White	2736	1276	1280	634	640	640	640	16	16
	American Indian	5	1262	1220	648	610	614	620	17	17
	Asian	566		1360	647	660	691	700	16	16
	Black	222	1145	1150	576	580	569	570	15	15
	Hispanic	1603	1194	1190	593	590	600	600	15	15
	Native Hawaii	6	1270	1360	627	640	643	700	17	16
	Multi-racial / Excluding Black	145	1303	1310	644	640	656	660	16	16
	International	49	1306	1350	599	600	709	750	14	15
	Unknown or Not Reported	0								

College
Agriculture

Fall 2017 SAT		SAT Composite			SAT Evidence-Based Reading and Writing		SAT Math		SAT Essay Total	
		#	Mean	Median	Mean	Median	Mean	Median	Mean	Median
Gender	Total	486	1200	1200	599	600	600	600	15	16
	Female	339	1196	1200	599	600	596	590	16	16
	Male	147	1211	1210	600	600	610	610	15	15
Ethnicity	White	268	1231	1230	617	620	613	610	16	16
	American Indian	1	1140	1140	600	600	540	540	17	17
	Asian	31	1275	1280	613	610	661	680	16	17
	Black	21	1125	1130	573	580	552	570	15	16
	Hispanic	154	1142	1140	569	570	574	580	15	15
	Native Hawaii	0								
	Multi-racial / Excluding Black	8	1219	1220	615	630	604	595	17	17
	International	3	1167	1110	593	580	583	530	18	18
	Unknown or Not Reported	0								

New SAT Scores

11/16/2017

**Average and Median SAT by Gender by Ethnicity
First-Time In College Full-Time (FTFT)
College Station and Galveston**

College
Architecture

Fall 2017 SAT		SAT Composite			SAT Evidence-Based Reading and Writing		SAT Math		SAT Essay Total	
		#	Mean	Median	Mean	Median	Mean	Median	Mean	Median
Gender	Total	177	1215	1230	607	610	607	600	15	15
	Female	68	1222	1235	620	620	600	590	15	15
	Male	109	1210	1230	599	610	611	600	15	15
Ethnicity	White	101	1256	1260	630	630	623	610	16	16
	American Indian	0								
	Asian	8	1230	1245	598	605	633	645	13	14
	Black	8	1076	1105	536	515	540	555	14	14
	Hispanic	58	1155	1145	575	570	580	575	14	15
	Native Hawaii	0								
	Multi-racial / Excluding Black	2	1380	1380	680	680	700	700	16	16
	International	0								
	Unknown or Not Reported	0								

College Business

Fall 2017 SAT		SAT Composite			SAT Evidence-Based Reading and Writing		SAT Math		SAT Essay Total	
		#	Mean	Median	Mean	Median	Mean	Median	Mean	Median
Gender	Total	550	1264	1280	626	630	637	640	16	16
	Female	281	1248	1260	621	620	626	630	16	16
	Male	269	1280	1290	632	640	648	660	16	16
Ethnicity	White	350	1283	1290	637	640	645	650	16	16
	American Indian	0								
	Asian	43	1324	1360	650	660	677	690	16	17
	Black	16	1096	1085	536	530	561	540	14	16
	Hispanic	123	1211	1210	601	600	609	610	15	15
	Native Hawaii	0								
	Multi-racial / Excluding Black	15	1313	1340	650	660	656	660	17	17
	International	3	980	970	463	450	517	520	11	11
	Unknown or Not Reported	0								

New SAT Scores
11/9/2017

**Average and Median SAT by Gender by Ethnicity
First-Time In College Full-Time (FTFT)
College Station and Galveston**

College
Education

Fall 2017 SAT		SAT Composite			SAT Evidence-Based Reading and Writing		SAT Math		SAT Essay Total	
		#	Mean	Median	Mean	Median	Mean	Median	Mean	Median
Gender	Total	455	1176	1170	588	590	586	580	15	15
	Female	367	1178	1170	591	590	586	580	15	15
	Male	88	1166	1165	577	580	588	580	14	15
Ethnicity	White	264	1206	1210	603	610	601	600	15	16
	American Indian	1	1380	1380	690	690	690	690	18	18
	Asian	24	1230	1210	605	585	625	615	15	17
	Black	30	1055	1090	540	540	515	515	13	15
	Hispanic	124	1127	1120	563	560	564	560	14	14
	Native Hawaii	0								
	Multi-racial / Excluding Black	10	1216	1200	616	620	600	595	16	16
	International	2	1015	1015	460	460	535	535		
	Unknown or Not Reported	0								

College
Engineering

Fall 2017 SAT		SAT Composite			SAT Evidence-Based Reading and Writing		SAT Math		SAT Essay Total	
		#	Mean	Median	Mean	Median	Mean	Median	Mean	Median
Gender	Total	1619	1341	1350	652	660	688	690	16	16
	Female	370	1322	1330	650	650	672	670	16	17
	Male	1249	1347	1360	652	660	693	690	16	16
Ethnicity	White	773	1358	1360	663	670	693	700	16	16
	American Indian	1	1220	1220	600	600	620	620	14	14
	Asian	263	1385	1400	664	670	722	730	16	17
	Black	44	1288	1290	640	650	647	640	16	17
	Hispanic	453	1284	1290	626	630	657	660	15	16
	Native Hawaii	2	1360	1360	660	660	700	700	16	16
	Multi-racial / Excluding Black	49	1384	1390	675	670	705	710	16	16
	International	34	1370	1375	621	615	752	770	15	15
	Unknown or Not Reported	0								

New SAT Scores

11/16/2024

**Average and Median SAT by Gender by Ethnicity
First-Time In College Full-Time (FTFT)
College Station and Galveston**

College
Galveston

Fall 2017 SAT		SAT Composite			SAT Evidence-Based Reading and Writing		SAT Math		SAT Essay Total	
		#	Mean	Median	Mean	Median	Mean	Median	Mean	Median
Gender	Total	252	1151	1150	578	570	572	570	14	14
	Female	105	1125	1130	571	570	554	550	14	15
	Male	147	1168	1170	582	580	584	580	14	14
Ethnicity	White	168	1161	1160	583	580	577	575	14	14
	American Indian	1	1170	1170	610	610	560	560	16	16
	Asian	5	1198	1270	584	570	592	580	18	18
	Black	9	1178	1190	581	600	597	590	14	13
	Hispanic	58	1112	1115	563	555	548	550	15	15
	Native Hawaii	0								
	Multi-racial / Excluding Black	11	1152	1150	567	570	580	580	13	12
	International	0								
	Unknown or Not Reported	0								

College
Geosciences

Fall 2017 SAT		SAT Composite			SAT Evidence-Based Reading and Writing		SAT Math		SAT Essay Total	
		#	Mean	Median	Mean	Median	Mean	Median	Mean	Median
Gender	Total	66	1252	1280	618	630	634	640	15	15
	Female	34	1231	1240	615	630	617	630	16	16
	Male	32	1273	1300	621	630	653	660	15	14
Ethnicity	White	47	1267	1300	625	630	644	650	16	16
	American Indian	0								
	Asian	2	1235	1235	615	615	615	615	15	15
	Black	2	1300	1300	680	680	620	620	13	13
	Hispanic	13	1180	1170	584	560	593	600	13	14
	Native Hawaii	0								
	Multi-racial / Excluding Black	1	1400	1400	680	680	720	720	17	17
	International	1	1230	1230	550	550	680	680		
	Unknown or Not Reported	0								

New SAT Scores
11/9/2017

**Average and Median SAT by Gender by Ethnicity
First-Time In College Full-Time (FTFT)
College Station and Galveston**

College Liberal
Arts

Fall 2017 SAT		SAT Composite			SAT Evidence-Based Reading and Writing		SAT Math		SAT Essay Total	
		#	Mean	Median	Mean	Median	Mean	Median	Mean	Median
Gender	Total	542	1235	1245	627	640	606	610	16	16
	Female	357	1213	1220	619	620	593	590	16	16
	Male	185	1277	1300	644	650	630	640	16	16
Ethnicity	White	273	1278	1290	651	650	623	630	16	17
	American Indian	1	1400	1400	740	740	660	660	19	19
	Asian	39	1320	1330	655	670	666	680	17	17
	Black	24	1103	1105	565	575	537	535	14	15
	Hispanic	186	1163	1160	592	590	571	565	15	15
	Native Hawaii	1	990	990	530	530	460	460	20	20
	Multi-racial / Excluding Black	14	1335	1340	675	690	661	670	17	17
	International	4	1203	1210	565	540	638	605	11	11
	Unknown or Not Reported	0								

College Public
Health

Fall 2017 SAT		SAT Composite			SAT Evidence-Based Reading and Writing		SAT Math		SAT Essay Total	
		#	Mean	Median	Mean	Median	Mean	Median	Mean	Median
Gender	Total	70	1187	1195	599	600	587	590	15	15
	Female	56	1169	1160	594	590	575	565	15	15
	Male	14	1261	1270	619	615	636	655	14	15
Ethnicity	White	19	1224	1210	623	610	599	620	16	17
	American Indian	0								
	Asian	11	1303	1360	632	670	668	700	14	15
	Black	4	1045	1075	530	560	495	505	11	10
	Hispanic	35	1149	1160	582	580	568	560	14	15
	Native Hawaii	0								
	Multi-racial / Excluding Black	1	1160	1160	650	650	510	510	19	19
	International	0								
	Unknown or Not Reported	0								

New SAT Scores
11/9/2017

**Average and Median SAT by Gender by Ethnicity
First-Time In College Full-Time (FTFT)
College Station and Galveston**

College Science

Fall 2017 SAT		SAT Composite			SAT Evidence-Based Reading and Writing			SAT Math		SAT Essay Total	
		#	Mean	Median	Mean	Median	Mean	Median	Mean	Median	
Gender	Total	526	1241	1250	616	620	625	620	16	16	
	Female	316	1225	1220	614	610	612	610	16	16	
	Male	210	1264	1275	619	620	644	650	15	16	
Ethnicity	White	219	1280	1280	640	640	638	630	16	16	
	American Indian	0									
	Asian	77	1315	1330	641	640	677	700	16	16	
	Black	23	1120	1150	552	540	567	570	15	14	
	Hispanic	186	1173	1160	583	580	589	580	15	15	
	Native Hawaii	3	1303	1390	637	640	667	730	16	16	
	Multi-racial / Excluding Black	17	1284	1280	625	620	658	660	15	15	
	International	1	1510	1510	710	710	800	800	19	19	
	Unknown or Not Reported	0									

College
Veterinary
Medicine

Fall 2017 SAT		SAT Composite			SAT Evidence-Based Reading and Writing			SAT Math		SAT Essay Total	
		#	Mean	Median	Mean	Median	Mean	Median	Mean	Median	
Gender	Total	408	1232	1240	611	620	620	620	16	16	
	Female	292	1222	1230	609	615	613	610	16	16	
	Male	116	1257	1260	618	620	639	640	16	16	
Ethnicity	White	170	1261	1270	627	625	632	640	16	16	
	American Indian	0									
	Asian	55	1317	1330	636	650	682	690	17	17	
	Black	27	1162	1190	587	600	573	580	15	16	
	Hispanic	144	1173	1160	585	580	588	580	15	15	
	Native Hawaii	0									
	Multi-racial / Excluding Black	11	1295	1310	643	640	653	660	16	17	
	International	1	1380	1380	630	630	750	750			
	Unknown or Not Reported	0									

New SAT Scores

11/16/2024

**Average and Median SAT by Gender by Ethnicity
First-Time In College Full-Time (FTFT)
College Station and Galveston**

College Transition Academic Programs

Fall 2017 SAT		SAT Composite			SAT Evidence-Based Reading and Writing		SAT Math		SAT Essay Total	
		#	Mean	Median	Mean	Median	Mean	Median	Mean	Median
Gender	Total	181	1118	1130	559	560	559	560	14	14
	Female	100	1107	1100	556	555	551	550	14	15
	Male	81	1132	1150	563	570	569	570	14	14
Ethnicity	White	84	1131	1135	565	570	567	560	14	15
	American Indian	0								
	Asian	8	1115	1130	544	535	570	550	13	14
	Black	14	1082	1105	551	565	531	530	14	14
	Hispanic	69	1109	1110	554	560	554	550	14	14
	Native Hawaii	0								
	Multi-racial / Excluding Black	6	1127	1145	567	570	560	550	12	12
	International	0								
	Unknown or Not Reported	0								

New SAT Scores

Average SAT By Score Percentile Rank
Fall 2017 First-Time In College Full-Time (FTFT)
College Station and Galveston

College Total

SAT Percentile Rank	Grand Total	SAT Composite		SAT Evidence-Based Reading and Writing		SAT Math		SAT Essay Total	
	#	Mean	Standard Deviation	Mean	Standard Deviation	Mean	Standard Deviation	Mean	Standard Deviation
SAT Percentile Rank 99	57	1548	17	758	26	782	18	16.96	2.13
98	186	1497	15	734	27	759	29	17.40	2.52
95	427	1440	17	705	31	733	33	16.99	2.55
90	236	1404	5	686	33	716	36	17.03	2.59
85	207	1385	5	680	31	702	34	16.54	2.58
80	283	1364	5	675	30	689	32	16.77	2.76
75	253	1344	5	663	32	682	33	16.25	2.76
70	264	1325	5	657	33	668	34	15.88	2.62
65	299	1305	5	646	35	657	37	16.23	2.89
60	258	1285	5	636	33	648	36	16.08	2.72
55	128	1270	0	626	34	642	37	15.59	2.80
50	263	1255	5	623	31	633	32	15.62	3.08
45	282	1235	5	612	35	622	35	15.81	2.51
40	249	1215	5	605	33	609	33	15.35	2.43
35	241	1195	5	598	28	597	27	14.89	2.65
30	228	1175	5	585	31	590	30	14.68	2.76
25	365	1150	8	576	31	573	30	14.55	2.42
20	189	1126	5	561	32	564	32	14.47	2.73
15	233	1101	8	554	31	547	31	14.31	2.37
10	307	1063	14	529	29	534	28	13.76	2.68
5	258	1006	19	498	31	507	32	12.94	2.60
1	119	927	72	462	46	465	51	11.83	2.44

11/13/2017SD: Standard Deviation

**Average SAT By Score Percentile Rank
Fall 2017 First-Time In College Full-Time (FTFT)
College Station and Galveston**

College Agriculture

SAT Percentile Rank	Grand Total	SAT Composite		SAT Evidence-Based Reading and Writing		SAT Math		SAT Essay Total	
	#	Mean	Standard Deviation	Mean	Standard Deviation	Mean	Standard Deviation	Mean	Standard Deviation
SAT Percentile Rank 99	2	1545	21	760	28	790	0	17.00	
98	7	1499	13	749	35	750	32	18.83	1.47
95	14	1439	16	725	29	712	31	18.89	1.90
90	13	1405	5	695	24	707	36	17.73	2.65
85	8	1384	5	673	14	700	23	16.00	2.71
80	17	1365	5	681	29	680	31	17.14	3.08
75	14	1342	4	674	19	669	22	17.36	2.82
70	15	1324	5	663	38	660	38	15.54	2.54
65	27	1304	5	651	35	651	36	16.12	2.95
60	22	1285	5	635	28	648	28	15.58	2.76
55	11	1270	0	652	40	618	40	14.56	3.36
50	27	1256	5	635	30	620	29	17.63	2.87
45	32	1236	5	625	30	610	29	16.13	2.61
40	30	1215	5	610	33	606	34	16.16	2.03
35	35	1195	5	595	26	599	25	15.24	2.54
30	24	1177	5	581	39	595	39	14.86	2.22
25	46	1148	8	578	29	570	30	14.72	2.32
20	23	1128	4	564	32	566	31	14.25	2.35
15	19	1103	7	550	34	552	34	14.63	2.60
10	42	1060	15	522	23	538	23	13.94	2.75
5	38	1007	18	500	31	508	38	13.44	2.40
1	20	932	23	461	28	472	38	12.53	2.64

11/13/2017SD: Standard Deviation

**Average SAT By Score Percentile Rank
Fall 2017 First-Time In College Full-Time (FTFT)
College Station and Galveston**

College Architecture

SAT Percentile Rank	Grand Total	SAT Composite		SAT Evidence-Based Reading and Writing		SAT Math		SAT Essay Total		
	#	Mean	Standard Deviation	Mean	Standard Deviation	Mean	Standard Deviation	Mean	Standard Deviation	
SAT Percentile Rank	99									
	98	1	1480		770		710		17.00	
	95	7	1439	17	710	30	714	42	18.25	2.06
	90	5	1404	5	682	28	724	26	18.00	4.36
	85	5	1384	5	684	34	700	36	17.50	1.91
	80	4	1363	5	688	36	675	31	19.00	2.71
	75	6	1347	5	683	34	655	44	15.00	1.58
	70	11	1325	5	675	33	649	33	15.89	1.83
	65	13	1307	5	646	33	659	33	14.50	3.25
	60	7	1284	5	646	36	639	35	17.40	1.52
	55	4	1270	0	635	34	625	44	16.33	1.53
	50	14	1257	5	643	34	616	37	14.42	2.19
	45	13	1237	5	614	29	622	31	15.11	2.76
	40	10	1217	5	604	42	613	41	14.00	1.80
	35	8	1191	4	601	30	589	32	14.33	3.08
	30	6	1172	4	593	31	582	33	13.40	3.51
	25	16	1152	8	579	23	573	26	15.27	2.02
	20	9	1126	5	559	36	568	33	13.86	3.72
	15	7	1103	10	547	33	559	34	15.20	0.84
	10	13	1063	12	522	33	538	32	14.08	2.57
	5	13	1009	25	495	31	512	38	13.73	3.17
	1	5	944	13	478	18	466	19	11.00	3.37

11/13/2017SD: Standard Deviation

**Average SAT By Score Percentile Rank
Fall 2017 First-Time In College Full-Time (FTFT)
College Station and Galveston**

College Business

SAT Percentile Rank	Grand Total	SAT Composite		SAT Evidence-Based Reading and Writing		SAT Math		SAT Essay Total	
	#	Mean	Standard Deviation	Mean	Standard Deviation	Mean	Standard Deviation	Mean	Standard Deviation
SAT Percentile Rank 99	2	1550	14	745	21	785	7	18.00	
98	8	1494	15	731	26	754	36	18.17	3.82
95	45	1444	19	708	31	732	30	17.81	2.54
90	31	1404	5	696	31	706	35	17.05	1.57
85	31	1384	5	689	25	696	27	17.43	2.71
80	41	1364	5	683	24	684	26	17.03	2.47
75	31	1344	5	675	24	668	25	15.95	2.79
70	20	1326	5	646	38	678	37	17.38	2.68
65	34	1305	5	641	25	662	28	15.81	4.48
60	34	1286	5	641	30	642	32	17.00	2.89
55	15	1270	0	635	38	638	37	15.33	2.71
50	28	1256	5	622	28	635	28	16.21	2.72
45	35	1235	5	600	29	633	28	16.26	2.35
40	30	1216	5	610	25	605	27	15.75	2.47
35	23	1196	5	600	23	597	24	14.29	2.89
30	18	1175	5	591	29	584	29	14.67	2.64
25	28	1150	7	575	35	575	25	14.50	2.28
20	10	1127	5	550	39	574	31	14.40	2.61
15	25	1102	8	550	21	552	23	13.84	1.92
10	28	1067	12	533	24	537	28	13.28	2.76
5	22	1001	21	495	28	507	32	12.75	2.46
1	11	983	207	465	105	516	98	11.67	3.78

11/13/2017SD: Standard Deviation

**Average SAT By Score Percentile Rank
Fall 2017 First-Time In College Full-Time (FTFT)
College Station and Galveston**

College Education

SAT Percentile Rank	Grand Total	SAT Composite		SAT Evidence-Based Reading and Writing		SAT Math		SAT Essay Total	
	#	Mean	Standard Deviation	Mean	Standard Deviation	Mean	Standard Deviation	Mean	Standard Deviation
SAT Percentile Rank 99	1	1570		770		800			
98	2	1480	0	735	7	715	35	18.00	
95	11	1436	19	726	27	724	24	18.20	2.49
90	4	1400	0	690	22	703	17	16.50	0.71
85	9	1384	5	686	31	703	39	17.14	0.69
80	12	1365	5	682	24	686	25	17.14	3.58
75	12	1345	5	669	30	676	29	16.11	1.69
70	14	1324	5	668	31	656	32	16.67	2.46
65	16	1304	5	658	28	644	29	17.62	1.76
60	24	1285	5	646	25	634	36	16.37	1.67
55	12	1270	0	623	41	643	41	16.33	2.69
50	21	1255	5	627	31	629	31	14.63	3.74
45	22	1235	5	615	33	618	31	14.68	2.63
40	25	1214	5	605	37	602	38	15.92	2.02
35	23	1197	4	605	29	595	26	15.65	2.23
30	31	1175	5	593	24	584	23	14.33	2.12
25	43	1150	8	577	29	571	28	14.47	2.40
20	27	1125	5	566	35	557	33	15.33	2.56
15	37	1102	8	563	28	537	28	14.54	2.11
10	42	1062	13	530	32	530	28	13.52	2.31
5	44	1008	20	492	29	517	27	12.58	3.00
1	23	918	41	451	42	464	38	11.33	2.58

11/13/2017SD: Standard Deviation

**Average SAT By Score Percentile Rank
Fall 2017 First-Time In College Full-Time (FTFT)
College Station and Galveston**

College Engineering

SAT Percentile Rank	Grand Total	SAT Composite		SAT Evidence-Based Reading and Writing		SAT Math		SAT Essay Total	
	#	Mean	Standard Deviation	Mean	Standard Deviation	Mean	Standard Deviation	Mean	Standard Deviation
SAT Percentile Rank 99	39	1549	16	755	26	784	13	16.43	2.01
98	135	1498	15	731	27	762	27	16.97	2.41
95	255	1440	17	701	30	737	32	16.76	2.43
90	123	1404	5	678	32	725	34	16.72	2.73
85	92	1385	5	668	33	715	34	15.97	2.70
80	141	1364	5	665	31	699	32	16.26	2.73
75	121	1345	5	652	32	694	32	15.89	2.69
70	99	1325	5	647	34	678	35	15.63	2.59
65	103	1305	5	633	35	671	35	16.05	2.53
60	87	1286	5	625	34	660	36	15.75	2.84
55	36	1270	0	618	27	652	27	15.25	2.41
50	68	1255	5	613	28	645	32	15.19	2.61
45	71	1235	5	598	34	636	34	15.70	2.74
40	49	1215	5	587	32	629	29	14.73	2.34
35	47	1194	5	586	29	606	29	14.22	2.48
30	44	1175	5	576	32	598	30	14.05	3.01
25	57	1149	8	557	36	591	35	14.56	2.30
20	20	1126	5	539	32	589	29	13.12	2.57
15	17	1102	8	541	30	558	30	13.64	2.27
10	13	1060	14	499	27	558	26	14.09	2.70
5	2	1000	14	465	7	535	7	11.50	3.54
1									

11/13/2017SD: Standard Deviation

Average SAT By Score Percentile Rank
Fall 2017 First-Time In College Full-Time (FTFT)
College Station and Galveston

College Geosciences

SAT Percentile Rank	Grand Total	SAT Composite		SAT Evidence-Based Reading and Writing		SAT Math		SAT Essay Total		
	#	Mean	Standard Deviation	Mean	Standard Deviation	Mean	Standard Deviation	Mean	Standard Deviation	
SAT Percentile Rank	99									
	98									
	95	4	1443	19	728	26	708	19	15.33	1.15
	90	4	1403	5	660	18	743	21	16.50	1.73
	85									
	80	2	1365	7	725	7	650	14		
	75	3	1340	0	647	23	693	23	14.33	2.31
	70	9	1327	5	650	31	677	32	15.00	3.67
	65	8	1308	5	658	21	653	19	16.80	2.28
	60	4	1280	0	610	38	668	38	13.00	
	55									
	50	2	1250	0	675	49	580	42		
	45	5	1230	0	588	30	642	30	14.00	1.00
	40	8	1215	5	609	20	606	23	15.43	2.37
	35	1	1190		630		560		15.00	
	30	3	1170	0	567	12	600	10	15.00	5.66
	25	2	1150	14	580	42	590	0	16.00	
	20	1	1120		500		620		13.00	
	15	1	1100		550		550		14.00	
	10	6	1057	19	513	15	543	27	14.80	3.63
	5	3	1010	17	507	21	503	6	14.00	5.66
	1									

11/13/2017SD: Standard Deviation

**Average SAT By Score Percentile Rank
Fall 2017 First-Time In College Full-Time (FTFT)
College Station and Galveston**

College Transition Academic Programs

SAT Percentile Rank	Grand Total	SAT Composite		SAT Evidence-Based Reading and Writing		SAT Math		SAT Essay Total		
	#	Mean	Standard Deviation	Mean	Standard Deviation	Mean	Standard Deviation	Mean	Standard Deviation	
SAT Percentile Rank	99									
	98									
	95									
	90									
	85	1	1380		700		680		14.00	
	80									
	75									
	70									
	65									
	60	1	1280		670		610		15.00	
	55									
	50	1	1260		640		620		17.00	
	45	10	1231	3	605	31	626	30	15.33	2.60
	40	8	1216	5	595	30	621	26	15.88	2.80
	35	16	1194	5	606	23	588	23	14.64	3.80
	30	13	1174	5	578	32	598	33	14.90	3.35
	25	28	1149	8	574	27	575	25	13.20	3.01
	20	19	1127	5	567	27	558	29	14.41	2.65
	15	26	1098	8	552	32	545	29	14.14	2.80
	10	32	1064	15	534	26	530	25	14.07	2.75
	5	22	1010	17	500	28	511	26	11.88	2.28
	1	4	908	61	455	38	453	34	11.67	1.15

11/13/2017SD: Standard Deviation

**Average SAT By Score Percentile Rank
Fall 2017 First-Time In College Full-Time (FTFT)
College Station and Galveston**

College Galveston

SAT Percentile Rank	Grand Total	SAT Composite		SAT Evidence-Based Reading and Writing		SAT Math		SAT Essay Total	
	#	Mean	Standard Deviation	Mean	Standard Deviation	Mean	Standard Deviation	Mean	Standard Deviation
SAT Percentile Rank	99								
	98								
	95	2	1445	35	705	35	740	71	19.00
	90								
	85	2	1380	0	700	28	680	28	18.50
	80								
	75	2	1345	7	665	49	680	42	17.50
	70	9	1323	5	671	23	652	22	15.43
	65	6	1305	5	675	36	630	34	15.83
	60	9	1284	5	663	33	621	34	14.43
	55	8	1270	0	623	37	633	48	14.80
	50	11	1255	5	609	37	639	34	13.63
	45	8	1234	5	600	44	629	46	15.57
	40	14	1215	5	609	42	604	36	13.73
	35	20	1194	5	591	27	603	28	14.29
	30	24	1175	5	590	22	586	24	14.47
	25	32	1149	8	586	33	561	31	14.13
	20	17	1124	5	560	26	565	26	13.45
	15	25	1098	7	551	25	546	26	13.86
	10	27	1061	15	536	30	527	30	14.00
	5	27	1004	18	504	37	498	34	12.57
	1	9	920	43	472	31	448	34	10.17

11/13/2017SD: Standard Deviation

Average SAT By Score Percentile Rank
Fall 2017 First-Time In College Full-Time (FTFT)
College Station and Galveston

College Liberal Arts

SAT Percentile Rank	Grand Total	SAT Composite		SAT Evidence-Based Reading and Writing		SAT Math		SAT Essay Total	
	#	Mean	Standard Deviation	Mean	Standard Deviation	Mean	Standard Deviation	Mean	Standard Deviation
SAT Percentile Rank 99	2	1530	0	780	28	750	28	19.50	2.12
98	11	1497	17	754	27	742	30	18.00	3.08
95	25	1437	17	710	35	722	39	16.69	3.18
90	20	1404	5	716	29	678	31	18.92	2.15
85	26	1386	5	703	22	680	23	17.14	2.46
80	29	1364	5	691	24	672	28	17.29	2.05
75	30	1344	5	685	23	659	22	17.70	3.18
70	32	1323	5	674	25	647	25	16.23	2.29
65	33	1306	5	667	33	633	37	16.18	2.84
60	26	1285	5	654	29	629	32	16.67	3.06
55	16	1270	0	638	35	630	39	15.50	3.63
50	21	1254	5	633	27	618	28	16.00	3.37
45	34	1236	5	636	35	598	34	15.67	2.04
40	23	1214	5	622	28	593	28	15.79	2.42
35	16	1196	5	619	31	573	28	15.67	2.61
30	28	1175	5	600	32	576	32	15.83	3.05
25	39	1150	8	585	28	565	30	14.36	2.30
20	28	1125	5	570	32	552	28	14.50	2.87
15	26	1102	7	567	25	537	25	15.11	2.40
10	31	1065	14	537	34	528	33	13.81	2.33
5	27	999	21	509	37	490	35	13.64	3.05
1	19	909	47	453	32	458	55	12.24	2.36

11/13/2017SD: Standard Deviation

**Average SAT By Score Percentile Rank
Fall 2017 First-Time In College Full-Time (FTFT)
College Station and Galveston**

College Public Health

SAT Percentile Rank	Grand Total	SAT Composite		SAT Evidence-Based Reading and Writing		SAT Math		SAT Essay Total	
	#	Mean	Standard Deviation	Mean	Standard Deviation	Mean	Standard Deviation	Mean	Standard Deviation
SAT Percentile Rank	99								
	98	1	1510		760		760		
	95	2	1440	28	715	49	710	57	
	90	1	1410		730		680		17.00
	85	4	1385	6	693	33	683	62	18.00
	80	4	1368	5	695	33	673	34	18.33
	75	1	1350		670		680		15.00
	70	1	1330		620		710		16.00
	65	3	1307	6	670	26	640	20	15.50
	60	1	1290		580		710		15.00
	55								
	50	7	1254	5	621	23	633	23	14.67
	45	4	1238	5	648	29	590	27	19.33
	40	3	1217	6	597	23	620	17	16.00
	35	5	1196	5	590	23	604	26	13.00
	30								
	25	5	1156	9	602	31	550	29	17.33
	20	3	1123	6	580	26	517	61	16.00
	15	4	1105	6	580	45	525	45	14.75
	10	10	1065	16	531	30	535	21	12.44
	5	8	1005	14	510	21	500	16	12.86
	1	3	933	25	473	78	460	53	11.33

11/13/2017SD: Standard Deviation

**Average SAT By Score Percentile Rank
Fall 2017 First-Time In College Full-Time (FTFT)
College Station and Galveston**

College Science

SAT Percentile Rank	Grand Total	SAT Composite		SAT Evidence-Based Reading and Writing		SAT Math		SAT Essay Total	
	#	Mean	Standard Deviation	Mean	Standard Deviation	Mean	Standard Deviation	Mean	Standard Deviation
SAT Percentile Rank 99	7	1544	15	764	24	776	25	17.00	
98	13	1501	18	743	21	758	28	18.56	2.24
95	45	1442	16	711	31	731	32	16.94	3.01
90	23	1407	4	692	33	714	35	16.50	2.13
85	14	1384	5	679	26	695	36	15.00	1.93
80	19	1364	5	690	22	667	32	16.87	3.02
75	17	1342	4	665	33	682	31	16.69	2.93
70	26	1325	5	661	29	666	39	15.20	2.89
65	30	1305	5	662	33	638	33	17.19	2.58
60	28	1286	5	632	34	656	36	16.32	2.69
55	8	1270	0	616	25	648	34	16.67	0.58
50	35	1255	5	613	33	643	34	16.23	3.52
45	28	1235	5	610	30	623	29	16.50	1.96
40	23	1215	5	612	30	601	30	15.00	2.66
35	25	1196	5	596	27	601	26	15.91	2.49
30	21	1176	5	578	33	596	28	14.23	2.80
25	41	1151	7	578	27	573	27	15.13	2.03
20	18	1127	5	561	29	566	28	16.08	2.53
15	21	1098	8	539	45	560	46	14.06	2.14
10	40	1066	13	530	28	538	26	13.76	3.03
5	30	1005	16	495	28	510	25	13.56	2.29
1	14	921	38	470	39	451	39	11.77	1.83

11/13/2017SD: Standard Deviation

**Average SAT By Score Percentile Rank
Fall 2017 First-Time In College Full-Time (FTFT)
College Station and Galveston**

College Veterinary Medicine

SAT Percentile Rank	Grand Total	SAT Composite		SAT Evidence-Based Reading and Writing		SAT Math		SAT Essay Total	
	#	Mean	Deviation	Mean	Deviation	Mean	Deviation	Mean	Deviation
SAT Percentile Rank 99	4	1550	27	775	30	778	33	19.50	2.12
98	8	1496	16	725	29	760	35	19.00	2.65
95	17	1439	16	706	35	731	35	16.91	2.07
90	12	1402	4	679	32	721	35	18.14	3.63
85	15	1385	5	693	32	692	35	17.08	2.19
80	14	1364	5	670	21	695	24	18.00	3.44
75	16	1343	5	661	37	682	38	16.31	2.95
70	28	1326	5	657	22	669	21	16.14	2.87
65	26	1304	5	637	36	670	42	16.42	3.20
60	15	1287	5	636	26	651	27	16.15	2.70
55	18	1270	0	617	33	653	35	16.92	3.09
50	28	1256	5	631	30	627	27	15.62	2.75
45	20	1236	5	623	39	610	40	16.06	1.88
40	26	1217	5	607	36	608	38	15.88	2.31
35	22	1195	5	601	22	593	21	15.17	2.73
30	16	1174	5	579	26	595	27	15.71	2.02
25	28	1148	8	578	28	571	28	14.96	1.99
20	14	1126	5	562	26	566	27	14.67	2.74
15	25	1102	9	554	29	548	31	14.52	2.73
10	23	1059	16	527	26	528	27	13.38	3.28
5	22	1007	20	491	27	512	31	11.86	2.07
1	11	920	31	475	32	447	40	13.00	1.26

11/13/2017SD: Standard Deviation

**Average and Median ACT by Gender by Ethnicity
Fall 2017 First-Time In College Full-Time (FTFT)
College Station and Galveston**

College Total

Fall 2017 ACT		ACT Composite			ACT English		ACT Math		ACT Science Reasoning		ACT Reading		ACT Writing		ACT Essay	
		#	Mean	Median	Mean	Median	Mean	Median	Mean	Median	Mean	Median	Mean	Median	Mean	Median
Gender	Total	4362	28	28	27	27	27	27	27	27	29	30	21	21	7	7
	Female	2122	27	27	27	27	26	26	26	26	28	29	21	21	7	8
	Male	2240	29	29	28	28	28	28	29	29	29	30	20	21	7	7
Ethnicity	White	2936	28	29	28	28	27	27	28	28	29	30	21	21	7	7
	American Indian	12	28	28	26	25	27	26	27	26	29	30	21	20	8	8
	Asian	304		30	30	30	30	30	29	29	30	31	22	23	8	8
	Black	111	24	24	23	23	23	24	24	24	25	26	20	20	7	7
	Hispanic	876	26	25	25	24	25	25	25	25	27	27	20	20	7	7
	Native Hawaii	1	28	28	30	30	25	25	27	27	31	31			7	7
	Multi-racial / Excluding Black	114	29	29	29	29	28	27	28	28	30	30	21	20	8	8
	International	8	31	31	29	29	35	35	33	33	28	28	23	21	7	8
	Unknown or Not Reported	0														

11/9/2017

College Agriculture

Fall 2017 ACT		ACT Composite			ACT English		ACT Math		ACT Science Reasoning		ACT Reading		ACT Writing		ACT Essay	
		#	Mean	Median	Mean	Median	Mean	Median	Mean	Median	Mean	Median	Mean	Median	Mean	Median
Gender	Total	408	26	26	26	25	25	25	26	25	28	29	20	20	7	7
	Female	276	26	26	26	25	25	25	26	25	28	29	21	21	7	7
	Male	132	26	26	25	24	25	25	26	26	27	28	19	19	7	7
Ethnicity	White	294	26	27	26	25	25	25	26	26	28	29	20	21	7	7
	American Indian	2	27	27	27	27	25	25	25	25	29	29	27	27		
	Asian	18	31	31	31	33	31	33	29	29	30	31	22	21	9	9
	Black	15	24	25	23	24	22	24	25	24	26	25	21	21	7	8
	Hispanic	74	25	24	24	24	23	24	24	24	26	26	18	19	7	7
	Native Hawaii	0														
	Multi-racial / Excluding Black	5	28	31	29	33	25	26	27	30	29	32	32	32	7	7
	International	0														
Unknown or Not Reported	0															

11/9/2017

**Average and Median ACT by Gender by Ethnicity
Fall 2017 First-Time In College Full-Time (FTFT)
College Station and Galveston**

College Architecture

Fall 2017 ACT		ACT Composite			ACT English		ACT Math		Reasoning		ACT Reading		ACT Writing		ACT Essay	
		#	Mean	Median	Mean	Median	Mean	Median	Mean	Median	Mean	Median	Mean	Median	Mean	Median
Gender	Total	132	26	27	26	25	26	26	26	25	27	28	19	19	7	7
	Female	53	27	27	27	26	26	26	26	25	28	28	21	22	7	7
	Male	79	26	27	25	25	26	26	26	25	27	28	18	19	7	6
Ethnicity	White	96	27	27	27	26	26	27	27	26	28	29	19	19	7	7
	American Indian	0														
	Asian	6	27	28	28	28	28	27	26	26	27	28	20	20	7	6
	Black	2	24	24	24	24	24	24	24	24	23	23	28	28	4	4
	Hispanic	26	24	23	23	22	23	24	24	24	25	23	20	19	7	6
	Native Hawaii	0														
	Multi-racial / Excluding Black	2	28	28	25	25	26	26	30	30	30	30	15	15		
	International	0														
	Unknown or Not Reported	0														

11/9/2017

College Business

Fall 2017 ACT		ACT Composite			ACT English		ACT Math		ACT Science Reasoning		ACT Reading		ACT Writing		ACT Essay	
		#	Mean	Median	Mean	Median	Mean	Median	Mean	Median	Mean	Median	Mean	Median	Mean	Median
Gender	Total	538	28	29	28	29	28	28	28	27	29	30	21	21	8	8
	Female	241	28	28	28	29	27	27	26	26	29	30	21	21	8	8
	Male	297	29	30	28	29	28	28	28	28	30	30	21	21	7	7
Ethnicity	White	408	29	30	29	29	28	28	28	28	30	30	21	21	8	8
	American Indian	3	31	30	30	31	31	30	31	33	33	33	20	20	9	9
	Asian	29	30	30	29	30	30	30	28	28	30	32	22	21	8	8
	Black	10	23	22	20	19	23	24	23	23	23	21	21	23	6	6
	Hispanic	75	27	28	27	28	26	27	26	26	29	29	21	21	7	7
	Native Hawaii	0														
	Multi-racial / Excluding Black	13	29	29	30	29	27	27	28	28	29	30	20	20	7	7
	International	0														
	Unknown or Not Reported	0														

11/9/2017

**Average and Median ACT by Gender by Ethnicity
Fall 2017 First-Time In College Full-Time (FTFT)
College Station and Galveston**

College Education

Fall 2017 ACT		ACT Composite			ACT English		ACT Math		ACT Science Reasoning		ACT Reading		ACT Writing		ACT Essay	
		#	Mean	Median	Mean	Median	Mean	Median	Mean	Median	Mean	Median	Mean	Median	Mean	Median
Gender	Total	388	26	26	25	25	25	25	25	25	27	27	20	20	7	7
	Female	303	26	26	26	25	24	25	25	24	27	27	20	20	7	7
	Male	85	25	26	24	24	25	26	26	26	26	26	19	18	7	6
Ethnicity	White	289	26	26	26	26	25	25	26	25	27	28	20	20	7	7
	American Indian	0														
	Asian	7	26	26	24	24	26	26	26	25	26	29	23	21	7	7
	Black	16	22	23	21	21	21	20	21	20	23	23	19	19	6	6
	Hispanic	67	23	23	23	22	23	23	22	22	24	24	20	19	7	7
	Native Hawaii	0														
	Multi-racial / Excluding Black	9	26	27	27	28	26	26	25	25	27	26	20	18	7	7
	International	0														
	Unknown or Not Reported	0														

11/9/2017

College Engineering

Fall 2017 ACT		ACT Composite			ACT English		ACT Math		ACT Science Reasoning		ACT Reading		ACT Writing		ACT Essay	
		#	Mean	Median	Mean	Median	Mean	Median	Mean	Median	Mean	Median	Mean	Median	Mean	Median
Gender	Total	1358	30	30	29	29	29	29	30	30	30	31	21	21	7	7
	Female	313	29	29	29	29	28	28	28	28	30	30	22	23	8	8
	Male	1045	30	30	29	29	30	30	30	30	30	31	21	21	7	7
Ethnicity	White	881	30	30	30	30	30	29	30	30	31	31	21	21	7	7
	American Indian	3	29	30	27	29	29	30	29	30	30	29	21	21	7	7
	Asian	137	31	31	30	30	31	31	30	30	31	31	23	23	8	8
	Black	25	29	30	28	28	28	28	29	29	31	32	22	21	8	7
	Hispanic	271	27	28	26	26	28	27	27	27	28	29	21	21	7	7
	Native Hawaii	0														
	Multi-racial / Excluding Black	33	31	31	31	32	31	31	30	30	31	31	22	21	9	9
	International	8	31	31	29	29	35	35	33	33	28	28	23	21	7	8
	Unknown or Not Reported	0														

11/9/2017

**Average and Median ACT by Gender by Ethnicity
Fall 2017 First-Time In College Full-Time (FTFT)
College Station and Galveston**

College Galveston

Fall 2017 ACT		ACT Composite			ACT English		ACT Math		ACT Science Reasoning		ACT Reading		ACT Writing		ACT Essay	
		#	Mean	Median	Mean	Median	Mean	Median	Mean	Median	Mean	Median	Mean	Median	Mean	Median
Gender	Total	171	24	24	23	23	23	23	24	24	25	25	18	18	7	7
	Female	64	23	22	23	22	22	22	23	23	24	23	19	19	7	7
	Male	107	24	25	23	23	24	24	25	24	25	26	17	17	7	7
Ethnicity	White	129	25	25	24	23	24	24	25	24	26	26	18	18	7	7
	American Indian	0														
	Asian	6	24	26	23	25	26	26	23	23	25	26	16	16	6	6
	Black	3	19	20	15	17	19	19	20	22	21	18	14	14	8	8
	Hispanic	28	22	22	21	22	20	20	22	22	23	22	17	18	6	7
	Native Hawaii	0														
	Multi-racial / Excluding Black	5	21	21	19	19	20	20	23	23	23	22	18	18	7	7
	International	0														
	Unknown or Not Reported	0														

11/9/2017

College Geosciences

Fall 2017 ACT		ACT Composite			ACT English		ACT Math		ACT Science Reasoning		ACT Reading		ACT Writing		ACT Essay	
		#	Mean	Median	Mean	Median	Mean	Median	Mean	Median	Mean	Median	Mean	Median	Mean	Median
Gender	Total	69	27	27	27	26	26	26	26	25	28	28	20	19	8	8
	Female	40	26	26	27	27	25	25	25	25	28	28	20	19	7	7
	Male	29	27	27	26	26	26	27	27	27	27	27	20	20	8	8
Ethnicity	White	49	27	27	27	28	26	26	27	26	28	28	20	20	8	8
	American Indian	0														
	Asian	0														
	Black	1	30	30	34	34	25	25	27	27	35	35			9	9
	Hispanic	16	24	24	24	23	24	25	24	23	25	26	19	19	7	7
	Native Hawaii	0														
	Multi-racial / Excluding Black	3	28	27	28	25	27	26	27	26	30	32	20	20	6	6
	International	0														
	Unknown or Not Reported	0														

11/9/2017

**Average and Median ACT by Gender by Ethnicity
Fall 2017 First-Time In College Full-Time (FTFT)
College Station and Galveston**

College Liberal Arts

Fall 2017 ACT		ACT Composite			ACT English		ACT Math		ACT Science Reasoning		ACT Reading		ACT Writing		ACT Essay	
		#	Mean	Median	Mean	Median	Mean	Median	Mean	Median	Mean	Median	Mean	Median	Mean	Median
Gender	Total	459	27	28	28	28	25	26	27	26	29	30	22	21	7	8
	Female	293	27	28	28	28	25	25	26	25	29	30	22	21	7	8
	Male	166	28	29	28	29	27	27	28	28	30	30	21	21	7	8
Ethnicity	White	299	28	29	29	29	26	26	27	27	30	31	21	21	7	8
	American Indian	1	25	25	25	25	23	23	24	24	29	29	18	18		
	Asian	24	30	30	30	29	29	29	28	26	30	32	23	23	9	9
	Black	14	23	22	23	22	21	21	22	22	24	23	20	21	7	7
	Hispanic	105	25	25	25	24	24	24	24	24	27	26	22	22	7	7
	Native Hawaii	0														
	Multi-racial / Excluding Black	16	28	28	28	27	27	26	28	29	30	31	20	22	8	8
	International	0														
	Unknown or Not Reported	0														

11/9/2017

College Public Health

Fall 2017 ACT		ACT Composite			ACT English		ACT Math		ACT Science Reasoning		ACT Reading		ACT Writing		ACT Essay	
		#	Mean	Median	Mean	Median	Mean	Median	Mean	Median	Mean	Median	Mean	Median	Mean	Median
Gender	Total	45	27	27	26	25	27	27	26	26	28	29	21	21	8	8
	Female	37	27	27	26	25	27	27	26	26	28	28	21	21	8	8
	Male	8	28	28	27	26	26	26	27	28	29	30	22	23	7	8
Ethnicity	White	27	27	27	26	25	26	27	26	26	28	29	21	21	8	8
	American Indian	0														
	Asian	8	30	30	30	31	29	30	29	29	29	30	23	21	10	10
	Black	1	23	23	21	21	24	24	20	20	26	26			6	6
	Hispanic	9	25	25	25	24	24	25	24	23	26	29	21	21	8	8
	Native Hawaii	0														
	Multi-racial / Excluding Black	0														
	International	0														
	Unknown or Not Reported	0														

11/9/2017

**Average and Median ACT by Gender by Ethnicity
Fall 2017 First-Time In College Full-Time (FTFT)
College Station and Galveston**

College Science

Fall 2017 ACT		ACT Composite			ACT English		ACT Math		ACT Science Reasoning		ACT Reading		ACT Writing		ACT Essay	
		#	Mean	Median	Mean	Median	Mean	Median	Mean	Median	Mean	Median	Mean	Median	Mean	Median
Gender	Total	363	28	29	27	28	27	27	28	28	29	30	21	21	7	8
	Female	223	27	28	27	27	26	27	27	26	28	29	21	21	8	8
	Male	140	29	30	28	29	28	28	29	29	30	31	20	20	7	7
Ethnicity	White	202	29	29	28	29	28	28	28	29	30	31	21	21	7	8
	American Indian	0														
	Asian	41	30	30	30	31	29	29	29	29	30	31	22	23	8	8
	Black	11	24	23	23	22	23	25	23	23	25	25	20	18	7	7
	Hispanic	89	25	25	24	23	24	24	25	24	26	27	19	19	7	7
	Native Hawaii	1	28	28	30	30	25	25	27	27	31	31			7	7
	Multi-racial / Excluding Black	19	30	31	30	30	28	28	30	31	32	32	22	22	8	8
	International	0														
	Unknown or Not Reported	0														

11/9/2017

College Veterinary Medicine

Fall 2017 ACT		ACT Composite			ACT English		ACT Math		ACT Science Reasoning		ACT Reading		ACT Writing		ACT Essay	
		#	Mean	Median	Mean	Median	Mean	Median	Mean	Median	Mean	Median	Mean	Median	Mean	Median
Gender	Total	347	27	28	27	28	27	27	27	26	28	29	21	21	7	7
	Female	236	27	27	27	27	26	26	26	26	28	29	21	21	7	7
	Male	111	28	28	27	28	28	28	29	29	29	29	21	20	7	8
Ethnicity	White	212	28	28	28	28	27	27	28	27	29	30	21	21	7	7
	American Indian	3	23	24	21	19	25	25	23	24	26	26	17	17	8	8
	Asian	28	30	30	30	30	30	29	29	30	31	32	23	24	8	8
	Black	9	22	22	21	21	22	22	22	22	21	22	17	15	6	6
	Hispanic	86	25	26	25	25	25	25	25	25	26	26	21	21	7	7
	Native Hawaii	0														
	Multi-racial / Excluding Black	9	27	26	27	25	26	25	26	26	28	30	19	20	7	7
	International	0														
	Unknown or Not Reported	0														

11/9/2017

**Average and Median ACT by Gender by Ethnicity
Fall 2017 First-Time In College Full-Time (FTFT)
College Station and Galveston**

College Transition Academic Programs

Fall 2017 ACT		ACT Composite			ACT English		ACT Math		ACT Science Reasoning		ACT Reading		ACT Writing		ACT Essay	
		#	Mean	Median	Mean	Median	Mean	Median	Mean	Median	Mean	Median	Mean	Median	Mean	Median
Gender	Total	84	22	23	21	21	22	22	23	22	23	22	18	18	7	7
	Female	43	22	23	21	21	21	21	22	22	23	22	19	19	7	7
	Male	41	22	22	21	21	22	23	23	24	22	22	17	16	7	7
Ethnicity	White	50	23	23	22	23	22	22	23	22	23	23	18	18	7	7
	American Indian	0														
	Asian	0														
	Black	4	22	22	21	22	20	20	23	22	24	25	12	12	8	8
	Hispanic	30	22	22	19	20	22	22	22	22	22	21	18	18	6	6
	Native Hawaii	0														
	Multi-racial / Excluding Black	0														
	International	0														
	Unknown or Not Reported	0														

11/9/2017

**Average ACT Score by ACT Percentile Rank
Fall 2017 First-Time In College (FTIC)
College Station and Galveston**

College Total

ACT Percentile Rank		ACT Composite			ACT English		ACT Math		ACT Science Reasoning		ACT Reading		ACT Writing		ACT Essay	
		#	Mean	SD	Mean	SD	Mean	SD	Mean	SD	Mean	SD	Mean	SD	Mean	SD
ACT Total		4362	28	4	27	5	27	4	27	4	29	5	21	5	7	1
Percentile	99	72	35	0	35	1	35	1	35	1	35	1	24	4	8	1
Rank	98	130	34	0	34	1	33	2	34	2	34	2	23	5	8	1
	95	557	32	0	32	2	31	2	32	2	33	2	23	4	8	1
	85	438	31	0	31	3	30	2	30	3	32	2	21	4	8	1
	80	501		0	30	3	29	2	29	3	31	3	21	4	8	1
	70	393	29	0	29	3	28	2	28	3	30	3	21	5	7	1
	65	365	28	0	28	3	27	2	27	3	30	3	21	4	8	1
	55	355	27	0	26	3	26	2	26	2	29	3	21	4	7	1
	45	308	26	0	25	3	25	3	25	2	27	3	20	4	7	1
	35	295	25	0	24	2	25	2	24	2	26	3	19	4	7	1
	30	240	24	0	23	2	24	3	24	2	25	3	19	4	7	1
	20	210	23	0	22	2	23	3	23	2	23	3	19	4	7	1
	15	163	22	0	21	2	22	2	22	2	23	3	19	5	6	1
	10	217	21	0	19	2	21	3	21	2	21	2	17	4	6	1
	5	62	19	0	18	2	19	3	20	2	19	3	16	4	6	1
	1	56	17	1	16	3	17	2	18	2	17	3	15	4	6	1

Note: SD__ Standard Deviation, 11/13/2017

College Agriculture

ACT Percentile Rank		ACT Composite			ACT English		ACT Math		ACT Science Reasoning		ACT Reading		ACT Writing		ACT Essay	
		#	Mean	SD	Mean	SD	Mean	SD	Mean	SD	Mean	SD	Mean	SD	Mean	SD
ACT Total		408	26	4	26	5	25	4	26	4	28	5	20	5	7	2
Percentile	99	1	35		36		34		36		34		23			
Rank	98	7	34	0	35	1	32	2	34	1	35	1	26	6	9	3
	95	27	32	0	33	2	31	3	31	2	33	2	23	5	8	1
	85	28	31	0	31	2	28	2	31	2	33	2	23	4	9	2
	80	24	30	0	30	4	28	2	30	3	31	2	23	4	8	2
	70	37	29	0	29	3	27	2	28	2	31	2	21	5	7	1
	65	37	28	0	27	3	26	2	28	2	31	3	22	6	7	1
	55	39	27	0	26	3	26	2	26	2	29	3	20	4	7	1
	45	39	26	0	25	3	25	3	26	2	28	3	20	4	8	2
	35	31	25	0	24	2	25	2	24	2	27	3	17	3	7	1
	30	39	24	0	24	2	23	3	23	2	25	3	18	5	7	1
	20	27	23	0	23	2	23	3	23	1	23	3	19	4	6	2
	15	24	22	0	21	2	21	2	22	2	23	3	18	5	7	2
	10	33	20	1	19	2	19	3	21	2	22	3	17	3	7	1
	5	7	19	0	18	2	18	2	20	3	20	2	16	2	5	1
	1	8	18	0	17	2	18	2	20	2	17	4	14	4	6	1

Note: SD__ Standard Deviation, 11/13/2017

**Average ACT Score by ACT Percentile Rank
Fall 2017 First-Time In College (FTIC)
College Station and Galveston**

College Architecture

ACT Percentile Rank		ACT Composite			ACT English		ACT Math		ACT Science Reasoning		ACT Reading		ACT Writing		ACT Essay	
		#	Mean	SD	Mean	SD	Mean	SD	Mean	SD	Mean	SD	Mean	SD	Mean	SD
ACT Total		132	26	4	26	5	26	4	26	4	27	5	19	6	7	1
Percentile	99	0														
Rank	98	3	34	0	34	1	31	2	35	1	35	1	24	4		
	95	7	32	1	32	2	31	2	33	3	33	2	20	5	8	
	85	9	31	0	33	2	29	3	31	3	32	2	17	8	8	1
	80	17	30	0	30	2	29	2	29	3	31	3	19	5	6	0
	70	7	29	0	29	3	27	2	28	3	31	2	19	5		
	65	10	28	0	27	2	27	2	27	2	31	2	22	4	10	1
	55	15	27	0	26	3	27	2	26	2	28	3	23	6	7	1
	45	11	26	0	25	2	26	1	25	2	27	3	22	7	7	1
	35	11	25	0	25	2	25	2	25	1	25	3	18	7	8	0
	30	9	24	0	23	1	25	2	23	1	25	3	17	6		
	20	6	23	0	23	2	22	2	23	2	23	3	21	4	6	1
	15	8	22	0	19	2	23	2	24	2	22	2	16	0	6	0
	10	14	21	1	19	2	20	2	22	1	21	2	17	2	6	2
	5	4	19	0	19	2	20	4	19	2	19	4	10		7	1
	1	1	18		15		20		18		20		16			

Note: SD__Standard Deviation, 11/13/2017

College Business

ACT Percentile Rank		ACT Composite			ACT English		ACT Math		ACT Science Reasoning		ACT Reading		ACT Writing		ACT Essay	
		#	Mean	SD	Mean	SD	Mean	SD	Mean	SD	Mean	SD	Mean	SD	Mean	SD
ACT Total		538	28	4	28	5	28	4	28	4	29	4	21	4	8	1
Percentile	99	8	35	0	35	1	35	1	34	2	35	1	23	6	9	1
Rank	98	14	34	0	35	1	32	2	34	2	34	2	23	2	8	1
	95	78	32	0	33	2	31	2	32	3	33	2	23	3	8	1
	85	64	31	0	32	2	30	2	29	3	32	2	20	4	8	1
	80	95	30	0	31	3	29	2	29	3	31	2	22	4	8	1
	70	38	29	0	29	3	28	2	28	3	31	3	21	4	8	1
	65	49	28	0	28	3	27	2	26	3	30	3	22	4	8	2
	55	44	27	0	26	3	27	2	26	2	28	3	21	5	8	1
	45	35	26	0	25	2	26	3	25	2	27	3	21	3	7	2
	35	35	25	0	24	2	26	2	24	2	26	3	19	3	7	1
	30	20	24	0	23	2	24	3	23	1	25	3	20	5	7	1
	20	26	23	0	22	2	24	2	23	2	23	2	19	4	8	1
	15	11	22	0	22	2	22	3	22	2	22	3	21	6	7	1
	10	11	20	1	19	2	21	3	21	2	20	2	18	3	6	0
	5	5	19	0	17	2	21	4	20	2	17	2	18	5	7	
	1	5	17	2	14	3	17	4	18	1	17	4	11	1	6	1

Note: SD__Standard Deviation, 11/13/2017

**Average ACT Score by ACT Percentile Rank
Fall 2017 First-Time In College (FTIC)
College Station and Galveston**

College Education

ACT Percentile Rank		ACT Composite			ACT English		ACT Math		ACT Science Reasoning		ACT Reading		ACT Writing		ACT Essay	
		#	Mean	SD	Mean	SD	Mean	SD	Mean	SD	Mean	SD	Mean	SD	Mean	SD
ACT Total		388	26	4	25	5	25	4	25	4	27	5	20	4	7	1
Percentile Rank	99	0														
	98	1	34		35		31		34		35		23			
	95	17	32	1	33	2	31	2	31	3	34	2	24	5	8	2
	85	22	31	0	32	3	29	2	29	3	33	2	22	3	7	2
	80	33	30	0	31	2	27	2	29	2	32	3	22	4	8	0
	70	31	29	0	29	3	27	2	28	3	31	2	20	4	7	1
	65	28	28	0	29	2	26	2	27	2	30	3	21	5	7	1
	55	32	27	0	26	3	26	2	27	2	28	3	21	4	7	1
	45	33	26	0	26	2	25	3	25	3	27	3	21	5	7	1
	35	38	25	0	25	3	24	2	24	2	27	3	20	4	7	0
	30	26	24	0	23	1	24	2	24	2	25	3	19	4	7	1
	20	33	23	0	22	2	23	3	23	2	23	2	19	3	7	1
	15	31	22	0	21	2	21	2	22	2	23	2	18	4	7	1
	10	35	21	0	20	2	21	2	20	2	21	2	16	5	6	1
	5	17	19	0	18	2	19	2	19	2	20	3	16	5	6	1
	1	11	17	1	16	2	17	2	18	2	17	3	18	2	7	1

Note: SD__Standard Deviation, 11/13/2017

College Engineering

ACT Percentile Rank		ACT Composite			ACT English		ACT Math		ACT Science Reasoning		ACT Reading		ACT Writing		ACT Essay	
		#	Mean	SD	Mean	SD	Mean	SD	Mean	SD	Mean	SD	Mean	SD	Mean	SD
ACT Total		1358	30	3	29	4	29	3	30	4	30	4	21	4	7	1
Percentile Rank	99	55	35	0	35	1	35	1	35	1	35	1	24	4	8	1
	98	82	34	0	34	2	33	2	34	2	34	2	23	6	8	1
	95	289	32	0	32	3	32	2	33	2	32	2	22	4	8	2
	85	183	31	0	30	3	30	2	31	3	32	2	21	4	8	1
	80	184	30	0	29	3	30	3	30	2	31	3	21	4	7	1
	70	140	29	0	28	3	29	2	29	3	30	3	21	5	7	1
	65	104	28	0	27	3	28	2	27	3	29	3	21	4	8	2
	55	89	27	0	26	2	27	2	26	2	29	3	21	4	7	1
	45	71	26	0	25	3	26	2	26	2	27	3	19	4	7	1
	35	65	25	0	24	2	26	2	25	2	25	3	20	5	7	1
	30	44	24	0	23	2	25	2	24	2	24	2	18	3	7	1
	20	23	23	0	22	2	25	2	23	2	22	2	18	5	7	1
	15	15	22	0	20	3	23	2	23	2	22	2	19	2	6	2
	10	10	21	0	19	2	23	2	21	2	20	2	19	4	5	1
	5	3	19	0	17	3	23	2	21	1	15	1	18	2	5	
	1	1	18		16		17		22		16				7	

Note: SD__Standard Deviation, 11/13/2017

**Average ACT Score by ACT Percentile Rank
Fall 2017 First-Time In College (FTIC)
College Station and Galveston**

College Galveston

ACT Percentile Rank		ACT Composite			ACT English		ACT Math		ACT Science Reasoning		ACT Reading		ACT Writing		ACT Essay	
		#	Mean	SD	Mean	SD	Mean	SD	Mean	SD	Mean	SD	Mean	SD	Mean	SD
ACT Total		171	24	4	23	5	23	4	24	4	25	5	18	4	7	1
Percentile Rank	99	0														
	98	1	34		33		32		34		36		30			
	95	1	32		30		32		33		32		26			
	85	4	31	0	32	3	28	1	31	2	34	2	23	3	8	
	80	3	30	0	30	4	26	3	30	4	34	2	18	8	4	
	70	10	29	0	30	4	27	2	29	4	30	3	19	1	8	0
	65	9	28	0	28	4	26	2	26	3	31	2	18	3	8	4
	55	17	27	0	26	3	26	2	27	2	28	3	18	4	7	1
	45	14	26	0	25	2	25	3	27	2	28	3	17	4	8	0
	35	19	25	0	24	2	24	3	25	2	27	3	17	3	6	1
	30	14	24	0	23	2	24	2	24	2	24	3	18	4	6	1
	20	14	23	0	22	3	22	3	23	2	24	3	16	5	7	2
	15	16	22	0	22	2	21	2	22	2	22	2	18	5	6	2
	10	29	21	1	19	3	20	3	21	2	21	3	18	3	6	1
	5	7	19	0	18	2	17	1	20	2	20	2	7		6	1
	1	13	17	1	15	3	18	2	19	2	17	3	15	4	7	1

Note: SD__Standard Deviation, 11/13/2017

College Geosciences

ACT Percentile Rank		ACT Composite			ACT English		ACT Math		ACT Science Reasoning		ACT Reading		ACT Writing		ACT Essay	
		#	Mean	SD	Mean	SD	Mean	SD	Mean	SD	Mean	SD	Mean	SD	Mean	SD
ACT Total		69	27	3	27	5	26	4	26	4	28	5	20	4	8	1
Percentile Rank	99	1	36		36		35		36		36				10	
	98	0														
	95	3	32	1	35	1	30	2	30	2	33	1	34		6	
	85	2	31	0	35	1	28	3	28	2	34	4			8	0
	80	9	30	0	31	3	28	3	30	3	31	3	21	4	9	1
	70	6	29	0	28	3	29	1	28	4	30	3	21	6	8	
	65	7	28	0	29	3	26	2	26	2	30	3	21	5	9	1
	55	8	27	0	28	2	26	1	27	2	28	3	20	3	6	1
	45	5	26	0	27	1	24	2	25	2	27	2	20	3	7	0
	35	11	25	0	23	1	24	3	25	2	26	3	19	3	6	
	30	7	24	0	24	4	23	3	23	2	25	2	20	3	7	1
	20	4	23	0	21	3	24	3	23	2	24	5	13		7	1
	15	1	22		19		22		24		22		21			
	10	3	21	1	18	3	23	2	22	1	19	2	15	1	7	
	5	1	19		17		18		21		18				7	
	1	1	18		20		17		18		16		19			

Note: SD__Standard Deviation, 11/13/2017

**Average ACT Score by ACT Percentile Rank
Fall 2017 First-Time In College (FTIC)
College Station and Galveston**

College Liberal Arts

ACT Percentile Rank		ACT Composite			ACT English		ACT Math		ACT Science Reasoning		ACT Reading		ACT Writing		ACT Essay	
		#	Mean	SD	Mean	SD	Mean	SD	Mean	SD	Mean	SD	Mean	SD	Mean	SD
ACT Total	Percentile Rank	459	27	3	28	5	25	4	27	4	29	5	22	4	7	1
99		0														
98		8	34	0	35	1	32	3	34	2	35	1	25	5	8	1
95		42	32	1	34	2	29	2	33	2	34	2	24	5	8	1
85		43	31	0	32	2	29	3	30	3	33	3	22	3	8	1
80		50	30	0	32	3	27	2	29	2	32	2	22	5	7	1
70		55	29	0	30	3	27	2	28	3	31	3	22	4	8	2
65		56	28	0	29	3	26	2	27	3	30	3	21	4	8	1
55		40	27	0	27	3	25	2	26	2	29	3	21	4	7	2
45		38	26	0	26	3	24	2	25	2	29	3	22	4	7	2
35		33	25	0	25	2	23	2	24	2	27	3	20	3	7	1
30		24	24	0	24	2	23	3	24	2	26	3	20	3	6	2
20		23	23	0	23	2	23	2	22	2	24	3	20	3	7	1
15		19	22	0	21	1	21	3	21	1	25	3	21	6	6	2
10		22	21	1	20	2	19	2	21	2	21	2	18	4	6	1
5		2	19	0	18	2	19	1	22	0	18	1			7	
1		4	17	1	18	3	18	2	15	2	18	2	18		7	1

Note: SD__Standard Deviation, 11/13/2017

College Public Health

ACT Percentile Rank		ACT Composite			ACT English		ACT Math		ACT Science Reasoning		ACT Reading		ACT Writing		ACT Essay	
		#	Mean	SD	Mean	SD	Mean	SD	Mean	SD	Mean	SD	Mean	SD	Mean	SD
ACT Total	Percentile Rank	45	27	4	26	5	27	4	26	4	28	5	21	4	8	1
99		0														
98		0														
95		4	32	0	33	3	31	3	31	2	34	2	21	1	9	
85		4	31	0	31	2	32	2	31	3	30	3	21	6	10	
80		9	30	0	30	3	27	2	30	3	32	2	22	3	7	1
70		2	29	0	29	2	28	0	29	0	29	2	24		6	
65		1	28		29		28		24		32				8	
55		4	27	0	26	1	27	2	26	1	31	2	23		7	1
45		2	26	0	24	1	25	3	27	1	28	3	28		9	
35		6	25	0	24	1	26	2	24	2	26	2	22	6	8	1
30		5	24	0	23	2	25	1	24	1	24	2	19	3	8	0
20		3	23	0	22	2	26	2	20	3	24	3	17	2	6	
15		2	22	0	21	0	24	1	21	3	21	3	23		8	
10		2	21	1	19	1	20	3	21	1	21	4	15		8	
5		0														
1		1	17		18		14		19		17				6	

Note: SD__Standard Deviation, 11/13/2017

**Average ACT Score by ACT Percentile Rank
Fall 2017 First-Time In College (FTIC)
College Station and Galveston**

College Science

ACT Percentile Rank		ACT Composite			ACT English		ACT Math		ACT Science Reasoning		ACT Reading		ACT Writing		ACT Essay	
		#	Mean	SD	Mean	SD	Mean	SD	Mean	SD	Mean	SD	Mean	SD	Mean	SD
ACT Total		363	28	4	27	5	27	4	28	4	29	5	21	4	7	1
Percentile Rank	99	5	35	0	35	1	35	1	35	1	35	2	23		8	0
	98	12	34	0	34	2	32	1	35	1	34	1	22	3	8	1
	95	46	32	0	33	2	31	3	32	2	33	2	23	3	8	1
	85	48	31	0	31	3	29	2	31	3	32	3	22	4	8	1
	80	37	30	0	31	3	28	2	29	3	31	2	20	4	8	1
	70	37	29	0	29	3	27	3	28	2	31	3	20	4	8	1
	65	28	28	0	27	3	27	3	27	3	30	2	22	4	8	1
	55	36	27	0	26	3	26	2	26	2	29	3	21	5	7	1
	45	22	26	0	24	3	26	2	25	2	28	3	19	4	7	2
	35	15	25	0	23	1	25	2	24	2	27	3	19	4	7	1
	30	16	24	0	24	2	24	3	24	2	24	3	19	3	7	1
	20	19	23	0	21	3	24	3	23	3	24	3	20	4	7	1
	15	12	22	0	20	2	22	2	22	1	23	2	20	5	6	2
	10	20	20	1	19	2	20	2	21	1	21	2	16	5	6	0
	5	5	19	0	17	2	17	3	21	1	21	2	16	2	5	2
	1	5	18	0	18	2	18	1	18	2	18	2	13	5	7	1

Note: SD__Standard Deviation, 11/13/2017

College Veterinary

ACT Percentile Rank		ACT Composite			ACT English		ACT Math		ACT Science Reasoning		ACT Reading		ACT Writing		ACT Essay	
		#	Mean	SD	Mean	SD	Mean	SD	Mean	SD	Mean	SD	Mean	SD	Mean	SD
ACT Total		347	27	4	27	5	27	4	27	4	28	5	21	4	7	1
Percentile Rank	99	2	35	0	35	1	34	3	36	1	35	2			9	1
	98	2	34	0	35	1	32	4	36	1	34	2	32			1
	95	43	32	1	33	2	31	2	33	2	33	2	24	4	8	1
	85	31	31	0	31	3	29	2	31	3	32	2	21	3	8	2
	80	40	30	0	31	3	28	2	29	3	31	2	21	3	8	1
	70	30	29	0	30	3	28	2	28	3	30	3	22	5	8	1
	65	36	28	0	28	3	27	2	27	3	29	3	20	4	7	1
	55	31	27	0	26	3	26	2	26	2	29	3	21	3	8	1
	45	35	26	0	26	2	25	2	25	2	27	3	20	4	7	2
	35	23	25	0	23	2	25	2	25	2	26	2	21	3	7	1
	30	21	24	0	23	2	23	2	24	2	26	2	21	4	7	1
	20	16	23	0	23	2	23	2	23	2	22	2	18	5	7	1
	15	12	22	0	20	2	23	2	22	2	22	3	19	5	7	1
	10	18	20	1	19	2	21	2	22	2	20	3	18	5	7	1
	5	4	19	0	18	2	21	3	20	1	18	2	17	2		
	1	3	17	1	15	2	17	2	19	2	17	3	24		6	1

Note: SD__Standard Deviation, 11/13/2017

**Average ACT Score by ACT Percentile Rank
Fall 2017 First-Time In College (FTIC)
College Station and Galveston**

College Transition

ACT Percentile Rank		ACT Composite			ACT English		ACT Math		ACT Science Reasoning		ACT Reading		ACT Writing		ACT Essay	
		#	Mean	SD	Mean	SD	Mean	SD	Mean	SD	Mean	SD	Mean	SD	Mean	SD
ACT Total		84	22	2	21	3	22	3	23	3	23	3	18	4	7	1
Percentile Rank	99	0														
	98	0														
	95	0														
	85	0														
	80	0														
	70	0														
	65	0														
	55	0														
	45	3	26	0	25	3	24	3	26	1	28	2	16			
	35	8	25	0	25	3	24	3	25	2	25	2	17	5	8	1
	30	15	24	0	23	2	23	2	24	2	25	2	18	4	7	1
	20	16	23	0	22	3	22	3	23	2	24	3	18	4	7	3
	15	12	22	0	21	2	21	3	23	2	22	5	19	4	6	1
	10	20	21	1	19	2	21	3	21	2	21	2	18	3	6	1
	5	7	19	0	18	2	18	1	21	2	19	2	13	3	6	1
	1	3	18	1	14	2	18	2	17	2	21	1	18		7	2

Note: SD__Standard Deviation, 11/13/2017

**Average and Median New GRE Scores by Gender by Ethnicity
College Station and Galveston**

College Total

Fall 2017 New GRE		New GRE Total			New GRE Verbal		New GRE Quantitative	
		#	Mean	Median	Mean	Median	Mean	Median
Gender	Total	3590	311	313	153	153	158	160
	Female	1495	308	308	153	153	155	155
	Male	2095	314	316	153	153	161	163
Ethnicity	White	1541	310	310	155	155	155	154
	American Indian	8	299	303	150	150	149	152
	Asian	162		315	154	154	160	161
	Black	125	301	302	152	152	149	149
	Hispanic	346	302	302	152	152	151	151
	Native Hawaii	0						
	Multi-racial / Excluding Black	65	311	314	155	157	155	156
	International	1271	315	317	151	152	164	165
	Unknown or Not Reported	72	313	314	156	156	157	156

11/9/2017

College Agriculture

Fall 2017 New GRE		New GRE Total			New GRE Verbal		New GRE Quantitative	
		#	Mean	Median	Mean	Median	Mean	Median
Gender	Total	279	302	303	151	151	152	151
	Female	169	302	302	151	151	152	151
	Male	110	303	303	151	152	152	151
Ethnicity	White	161	303	303	152	152	150	151
	American Indian	1	303	303	150	150	153	153
	Asian	3	308	306	153	152	154	154
	Black	9	294	298	148	145	146	144
	Hispanic	30	298	300	150	150	148	149
	Native Hawaii	0						
	Multi-racial / Excluding Black	4	307	311	152	154	155	157
	International	71	305	304	148	147	157	157
	Unknown or Not Reported	0						

11/9/2017

College Architecture

Fall 2017 New GRE		New GRE Total			New GRE Verbal		New GRE Quantitative	
		#	Mean	Median	Mean	Median	Mean	Median
Gender	Total	170	304	304	149	148	155	155
	Female	78	302	304	149	148	153	154
	Male	92	305	306	149	147	156	156
Ethnicity	White	59	304	303	152	151	152	152
	American Indian	0						
	Asian	5	309	309	151	148	158	157
	Black	6	290	289	145	144	144	145
	Hispanic	19	298	300	149	152	149	148
	Native Hawaii	0						
	Multi-racial / Excluding Black	2	294	294	146	146	149	149
	International	76	305	305	146	145	159	159
	Unknown or Not Reported	3	312	313	153	156	159	157

11/9/2017

**Average and Median New GRE Scores by Gender by Ethnicity
College Station and Galveston**

College Business

Fall 2017 New GRE		New GRE Total			New GRE Verbal		New GRE Quantitative	
		#	Mean	Median	Mean	Median	Mean	Median
Gender	Total	642	312	313	154	154	158	158
	Female	282	310	310	153	153	157	157
	Male	360	314	315	155	154	159	159
Ethnicity	White	363	309	309	154	154	155	155
	American Indian	3	301	301	147	147	154	154
	Asian	36	309	310	153	153	156	156
	Black	13	313	311	156	155	157	158
	Hispanic	56	303	301	150	148	153	153
	Native Hawaii	0						
	Multi-racial / Excluding Black	10	308	308	159	159	149	149
	International	116	319	319	155	154	164	164
	Unknown or Not Reported	45	311	311	155	155	156	154

11/9/2017

College Education

Fall 2017 New GRE		New GRE Total			New GRE Verbal		New GRE Quantitative	
		#	Mean	Median	Mean	Median	Mean	Median
Gender	Total	444	302	301	152	151	150	150
	Female	327	301	301	152	152	149	149
	Male	117	303	301	151	150	152	150
Ethnicity	White	255	302	302	152	152	150	150
	American Indian	3	278	278	145	145	133	133
	Asian	11	303	301	153	152	150	149
	Black	43	297	296	151	151	146	145
	Hispanic	88	295	297	149	149	146	145
	Native Hawaii	0						
	Multi-racial / Excluding Black	10	306	305	154	155	152	150
	International	29	310	310	150	151	159	161
	Unknown or Not Reported	5	317	325	161	164	156	160

11/9/2017

College Engineering

Fall 2017 New GRE		New GRE Total			New GRE Verbal		New GRE Quantitative	
		#	Mean	Median	Mean	Median	Mean	Median
Gender	Total	1118	317	318	153	152	164	165
	Female	227	315	317	153	152	163	164
	Male	891	317	318	153	153	165	166
Ethnicity	White	229	317	318	157	157	161	161
	American Indian	0						
	Asian	48	317	319	154	154	164	163
	Black	15	307	304	153	152	154	155
	Hispanic	59	308	308	152	152	156	156
	Native Hawaii	0						
	Multi-racial / Excluding Black	14	318	317	156	155	163	162
	International	747	317	319	152	152	166	167
	Unknown or Not Reported	6	315	315	157	156	158	158

11/9/2017

**Average and Median New GRE Scores by Gender by Ethnicity
College Station and Galveston**

College Galveston

Fall 2017 New GRE		New GRE Total			New GRE Verbal		New GRE Quantitative	
		#	Mean	Median	Mean	Median	Mean	Median
Gender	Total	32	308	305	155	155	153	152
	Female	17	306	306	155	156	152	151
	Male	15	311	305	155	151	156	154
Ethnicity	White	22	308	306	157	156	151	151
	American Indian	0						
	Asian	1						
	Black	1	302	302	148	148	154	154
	Hispanic	2	320	320	162	162	158	158
	Native Hawaii	0						
	Multi-racial / Excluding Black	1						
	International	5	306	303	150	151	156	156
	Unknown or Not Reported	0						

11/9/2017

College G. Bush School of Govt

Fall 2017 New GRE		New GRE Total			New GRE Verbal		New GRE Quantitative	
		#	Mean	Median	Mean	Median	Mean	Median
Gender	Total	187	306	306	155	156	151	151
	Female	98	305	304	155	156	150	149
	Male	89	307	308	156	156	151	152
Ethnicity	White	121	308	308	157	157	151	152
	American Indian	0						
	Asian	6	313	316	157	155	156	160
	Black	10	298	298	153	153	145	145
	Hispanic	20	301	300	154	153	148	148
	Native Hawaii	0						
	Multi-racial / Excluding Black	7	301	298	156	153	145	147
	International	20	303	302	150	149	154	153
	Unknown or Not Reported	3	312	309	159	159	153	150

11/9/2017

College Geosciences

Fall 2017 New GRE		New GRE Total			New GRE Verbal		New GRE Quantitative	
		#	Mean	Median	Mean	Median	Mean	Median
Gender	Total	83	309	309	153	152	156	156
	Female	33	306	306	154	153	152	150
	Male	50	312	313	152	152	160	161
Ethnicity	White	45	308	307	154	155	153	154
	American Indian	0						
	Asian	2						
	Black	3						
	Hispanic	9	306	304	155	153	151	151
	Native Hawaii	0						
	Multi-racial / Excluding Black	2	295	295	147	147	148	148
	International	20	314	315	151	152	163	165
	Unknown or Not Reported	2	308	308	155	155	153	153

11/9/2017

**Average and Median New GRE Scores by Gender by Ethnicity
College Station and Galveston**

College Liberal Arts

Fall 2017 New GRE		New GRE Total			New GRE Verbal		New GRE Quantitative	
		#	Mean	Median	Mean	Median	Mean	Median
Gender	Total	248	310	311	156	156	154	155
	Female	123	309	310	156	156	153	151
	Male	125	311	313	156	155	156	157
Ethnicity	White	82	313	314	159	161	154	154
	American Indian	1	313	313	162	162	151	151
	Asian	9	307	307	153	154	154	151
	Black	13	305	307	155	154	150	150
	Hispanic	23	301	302	154	154	146	147
	Native Hawaii	0						
	Multi-racial / Excluding Black	2	315	315	160	160	155	155
	International	117	310	313	151	152	159	161
	Unknown or Not Reported	1	321	321	158	158	163	163

11/9/2017

College Science

Fall 2017 New GRE		New GRE Total			New GRE Verbal		New GRE Quantitative	
		#	Mean	Median	Mean	Median	Mean	Median
Gender	Total	305	318	318	155	156	162	163
	Female	88	315	315	155	155	161	160
	Male	217	319	319	156	156	163	164
Ethnicity	White	156	318	318	158	158	160	160
	American Indian	0						
	Asian	34	319	318	156	155	163	163
	Black	8	312	311	153	155	159	157
	Hispanic	25	314	317	155	157	159	160
	Native Hawaii	0						
	Multi-racial / Excluding Black	10	324	325	161	161	162	164
	International	65	317	318	151	152	166	168
	Unknown or Not Reported	7	318	316	157	155	162	161

11/9/2017

College Veterinary Medicine

Fall 2017 New GRE		New GRE Total			New GRE Verbal		New GRE Quantitative	
		#	Mean	Median	Mean	Median	Mean	Median
Gender	Total	82	307	306	154	152	153	153
	Female	53	307	306	154	153	153	152
	Male	29	308	310	153	151	154	155
Ethnicity	White	48	308	306	155	155	153	153
	American Indian	0						
	Asian	7						
	Black	4	297	297	151	151	146	146
	Hispanic	15	305	306	153	152	152	152
	Native Hawaii	0						
	Multi-racial / Excluding Black	3	316	316	159	159	157	157
	International	5	310	313	150	150	161	162
	Unknown or Not Reported	0						

11/9/2017

**Average New GRE Scores by Score Percentile Rank (Fall 2017)
College Station and Galveston**

College Total

New GRE Percentile Rank	Total	New GRE Total			New GRE Verbal		New GRE Quantitative		
		#	Mean	SD	Mean	SD	Mean	SD	
		3590	311	12	153	6	158	8	
99		20	336	1	167	2	169	2	
98		98	330	1	164	3	167	3	
95		116	327	1	160	3	167	3	
90		108	324	1	159	4	165	4	
85		155		0	157	4	166	4	
80		82	321	0	156	4	165	4	
75		211	319	0	155	4	165	4	
70		99	318	0	155	5	163	5	
65		95	317	0	154	4	163	4	
60		176	316	0	154	5	162	5	
55		72	314	0	153	5	161	5	
50		182	313	1	153	5	160	5	
45		87	311	0	152	5	159	5	
40		140	310	1	152	5	158	5	
35		117	308	0	152	5	156	5	
30		127	305	0	152	4	153	4	
25		128	304	1	150	5	153	5	
20		147	301	1	149	5	152	5	
15		131	298	1	149	4	149	5	
10		138	294	1	147	4	147	4	
5		117	287	3	143	4	144	4	
1		1044	279	13	138	8	140	7	

Note: SD__Standard Deviation, 11/13/2017

**Average New GRE Scores by Score Percentile Rank (Fall 2017)
College Station and Galveston**

College Agriculture

New GRE		New GRE Total			New GRE Verbal		New GRE Quantitative	
		#	Mean	SD	Mean	SD	Mean	SD
New GRE	Total	279	302	11	151	7	152	7
Percentile	99	0						
Rank	98	2	330	1	165	3	165	2
	95	1	326		156		170	
	90	1	325		160		165	
	85	4	322	0	158	5	165	5
	80	2	321	0	159	8	163	8
	75	9	319	1	160	5	160	4
	70	4	318	0	162	3	157	3
	65	6	317	0	157	4	160	4
	60	17	316	0	157	6	159	6
	55	3	314	0	158	5	156	5
	50	13	313	1	157	5	156	5
	45	8	311	0	154	4	157	4
	40	9	310	1	154	3	156	3
	35	11	308	1	154	4	154	4
	30	20	306	1	153	3	153	3
	25	22	304	1	152	3	151	3
	20	30	301	1	149	4	152	4
	15	26	298	1	149	4	148	4
	10	32	294	1	147	4	148	3
	5	36	287	3	143	4	144	4
	1	23	275	4	136	3	139	4

Note: SD__Standard Deviation, 11/13/2017

**Average New GRE Scores by Score Percentile Rank (Fall 2017)
College Station and Galveston**

College Architecture

New GRE		New GRE Total			New GRE Verbal		New GRE Quantitative	
		#	Mean	SD	Mean	SD	Mean	SD
New GRE Total		170	304	12	149	7	155	8
Percentile Rank								
	99	1	337		170		167	
	98	2	332	1	167	3	165	4
	95	2	327	0	158	1	170	1
	90	1	324		160		164	
	85	1	322		162		160	
	80	0						
	75	3	319	1	157	3	163	3
	70	2	318	0	160	1	158	1
	65	3	317	0	156	5	161	5
	60	4	316	1	155	3	161	3
	55	6	314	0	158	6	156	6
	50	18	312	0	151	6	161	6
	45	5	311	0	152	6	159	6
	40	8	310	1	149	4	161	4
	35	7	308	1	150	6	157	6
	30	12	306	1	151	4	155	4
	25	18	304	1	147	5	156	5
	20	18	301	1	147	4	154	5
	15	10	298	1	146	4	153	4
	10	15	294	2	144	3	149	4
	5	15	288	2	143	3	145	3
	1	19	277	3	136	2	140	4

Note: SD__Standard Deviation, 11/13/2017

**Average New GRE Scores by Score Percentile Rank (Fall 2017)
College Station and Galveston**

College Business

New GRE		New GRE Total			New GRE Verbal		New GRE Quantitative	
		#	Mean	SD	Mean	SD	Mean	SD
New GRE Total		642	312	10	154	5	158	7
Percentile Rank	99	1	337		167		170	
	98	8	330	1	163	3	167	3
	95	7	327	1	162	3	165	3
	90	12	325	1	160	3	165	3
	85	13	322	0	158	3	164	3
	80	12	321	0	158	5	163	5
	75	29	319	1	157	4	163	4
	70	8	318	0	155	3	163	3
	65	10	317	0	153	3	164	3
	60	16	315	1	156	2	160	2
	55	7	314	0	153	3	161	3
	50	23	313	0	154	3	159	3
	45	11	311	0	154	3	157	3
	40	22	309	1	153	4	157	4
	35	14	307	1	154	3	154	3
	30	18	305	1	153	3	152	2
	25	17	304	1	151	3	153	3
	20	14	301	1	150	3	151	3
	15	11	298	1	147	3	151	3
	10	14	294	1	146	3	148	4
	5	6	289	3	143	5	146	4
	1	369						

Note: SD__Standard Deviation, 11/13/2017

Average New GRE Scores by Score Percentile Rank (Fall 2017)
College Station and Galveston

College Education

New GRE	Total	New GRE Total			New GRE Verbal		New GRE Quantitative	
		#	Mean	SD	Mean	SD	Mean	SD
New GRE	Total	444	302	11	152	6	150	7
Percentile Rank	99	0						
	98	2	330	1	166	4	164	3
	95	2	327	1	167	4	160	6
	90	2	325	1	166	1	159	1
	85	4	323	1	158	3	165	3
	80	2	321	0	162	6	159	6
	75	4	320	1	162	4	158	4
	70	1	318		157		161	
	65	2	317	0	157	0	160	0
	60	3	315	1	158	2	157	3
	55	1	314		158		156	
	50	3	313	1	155	6	158	6
	45	6	311	0	155	4	156	4
	40	12	310	1	153	4	157	4
	35	18	307	1	155	3	153	3
	30	10	305	0	154	3	151	3
	25	9	303	1	151	3	153	3
	20	21	301	1	152	5	149	5
	15	22	298	1	150	3	148	3
	10	21	295	1	149	2	145	3
	5	27	286	3	144	4	142	3
	1	272	278	2	140	5	138	6

Note: SD__Standard Deviation, 11/13/2017

**Average New GRE Scores by Score Percentile Rank (Fall 2017)
College Station and Galveston**

College Engineering

New GRE		New GRE Total			New GRE Verbal		New GRE Quantitative	
		#	Mean	SD	Mean	SD	Mean	SD
New GRE Total		1118	317	9	153	6	164	5
Percentile Rank	99	11	335	1	166	2	169	1
	98	54	330	1	163	3	168	2
	95	73	327	1	159	3	168	3
	90	62	324	1	158	3	167	3
	85	100	322	0	156	3	167	3
	80	52	321	0	154	2	167	2
	75	136	319	1	153	3	167	3
	70	60	318	0	153	3	165	3
	65	53	317	0	152	3	165	3
	60	84	316	0	151	3	165	3
	55	32	314	0	149	3	165	3
	50	73	312	1	150	4	163	4
	45	34	311	0	150	4	161	4
	40	39	310	1	147	4	163	4
	35	32	308	0	148	4	160	4
	30	29	305	1	148	4	157	4
	25	28	304	0	147	4	156	4
	20	25	301	1	145	4	156	4
	15	17	298	1	145	3	153	3
	10	14	293	2	144	4	149	4
	5	7	287	3	140	4	147	4
	1	103	310	43	152	25	158	18

Note: SD__Standard Deviation, 11/13/2017

**Average New GRE Scores by Score Percentile Rank (Fall 2017)
College Station and Galveston**

College Galveston

New GRE		New GRE Total			New GRE Verbal		New GRE Quantitative	
		#	Mean	SD	Mean	SD	Mean	SD
New GRE	Total	32	308	9	155	6	153	5
Percentile Rank	99	0						
	98	1	331		170		161	
	95	0						
	90	0						
	85	0						
	80	0						
	75	1	320		162		158	
	70	0						
	65	2	317	0	156	6	162	6
	60	2	315	0	159	1	156	1
	55	0						
	50	1	312		159		153	
	45	0						
	40	0						
	35	1	307		159		148	
	30	3	305	1	154	1	151	1
	25	1	303		153		150	
	20	4	301	1	152	3	150	3
	15	2	299	0	151	3	148	3
	10	1	295		139		156	
	5	0						
	1	13						

Note: SD__Standard Deviation, 11/13/2017

Average New GRE Scores by Score Percentile Rank (Fall 2017)
College Station and Galveston

College G. Bush School of
Govt

New GRE		New GRE Total			New GRE Verbal		New GRE Quantitative	
		#	Mean	SD	Mean	SD	Mean	SD
New GRE Total		187	306	10	155	6	151	6
Percentile Rank	99	0						
	98	3	331	2	167	2	164	1
	95	2	327	1	163	10	164	8
	90	7	325	1	165	3	159	3
	85	2	323	1	170	1	153	1
	80	2	321	0	161	1	161	1
	75	4	319	0	161	4	159	3
	70	3	318	0	166	4	152	4
	65	3	317	0	162	1	155	1
	60	10	316	1	159	5	157	5
	55	1	314		159		155	
	50	17	312	1	160	2	153	3
	45	7	311	0	155	4	156	4
	40	15	309	1	158	3	152	3
	35	13	308	1	155	3	153	3
	30	13	305	0	156	5	149	5
	25	12	303	0	155	3	148	3
	20	14	301	1	153	4	148	4
	15	22	298	1	152	4	146	4
	10	21	294	2	150	2	145	2
	5	11	286	4	144	4	141	3
	1	5						

Note: SD__Standard Deviation, 11/13/2017

Average New GRE Scores by Score Percentile Rank (Fall 2017)
College Station and Galveston

College Geosciences

New GRE Percentile Rank	New GRE Total	New GRE Total			New GRE Verbal		New GRE Quantitative	
		#	Mean	SD	Mean	SD	Mean	SD
Total		83	309	10	153	6	156	8
99		0						
98		2	329	0	165	8	165	8
95		2	327	1	163	5	164	4
90		0						
85		1	322		157		165	
80		2	321	0	151	0	170	0
75		3	319	1	154	8	165	8
70		4	318	0	155	5	163	5
65		1	317		154		163	
60		4	315	0	153	4	163	4
55		1	314		160		154	
50		3	313	1	155	4	157	4
45		1	311		161		150	
40		6	310	1	153	5	157	5
35		4	308	1	153	7	155	7
30		7	305	1	149	5	156	5
25		2	303	0	155	4	149	4
20		2	302	1	152	0	150	1
15		3	298	1	153	5	145	5
10		4	294	2	147	5	147	6
5		2	291	0	146	2	146	2
1		29	280		140		140	

Note: SD__Standard Deviation, 11/13/2017

Average New GRE Scores by Score Percentile Rank (Fall 2017)
College Station and Galveston

College Liberal Arts

New GRE		New GRE Total			New GRE Verbal		New GRE Quantitative	
		#	Mean	SD	Mean	SD	Mean	SD
New GRE Total		248	310	12	156	8	154	8
Percentile Rank	99	2	335	0	169	2	167	2
	98	4	330	1	167	3	163	2
	95	4	327	1	165	4	162	4
	90	7	324	1	163	4	161	5
	85	11	322	1	161	5	161	5
	80	5	321	0	158	5	163	5
	75	7	319	0	157	5	163	6
	70	3	318	0	160	7	158	7
	65	5	317	0	157	3	160	3
	60	10	316	0	160	5	156	5
	55	6	314	0	160	4	154	4
	50	14	313	0	157	5	155	5
	45	5	311	0	156	6	155	6
	40	15	309	1	155	6	154	6
	35	7	308	0	155	7	153	7
	30	6	306	1	154	6	152	6
	25	9	303	1	154	4	149	5
	20	10	301	1	153	3	148	4
	15	7	298	1	148	7	150	7
	10	7	294	2	149	5	145	6
	5	12	288	3	145	6	144	7
	1	92	274	8	138	10	136	2

Note: SD__Standard Deviation, 11/13/2017

Average New GRE Scores by Score Percentile Rank (Fall 2017)
College Station and Galveston

College Science

New GRE		New GRE Total			New GRE Verbal		New GRE Quantitative	
		#	Mean	SD	Mean	SD	Mean	SD
New GRE Total		305	318	9	155	7	162	6
Percentile Rank	99	5	337	2	168	2	168	2
	98	20	331	1	165	3	167	3
	95	23	327	1	160	3	167	3
	90	15	325	1	159	4	166	4
	85	19	322	1	158	4	165	4
	80	4	321	0	157	2	164	2
	75	13	319	1	157	4	163	4
	70	11	318	0	154	4	164	4
	65	9	317	0	156	4	161	4
	60	22	315	1	154	4	162	4
	55	12	314	0	152	4	162	4
	50	14	312	1	152	6	161	6
	45	8	311	0	151	5	160	5
	40	10	310	0	153	6	157	6
	35	10	308	0	151	3	157	3
	30	3	306	0	151	4	155	4
	25	5	304	1	146	6	157	6
	20	5	302	0	148	5	154	5
	15	6	299	1	145	5	154	5
	10	3	295	1	141	4	154	4
	5	1	290		136		154	
	1	87						

Note: SD__Standard Deviation, 11/13/2017

Average New GRE Scores by Score Percentile Rank (Fall 2017)
College Station and Galveston

College Veterinary Medicine

New GRE		New GRE Total			New GRE Verbal		New GRE Quantitative	
		#	Mean	SD	Mean	SD	Mean	SD
New GRE Total		82	307	9	154	6	153	5
Percentile Rank	99	0						
	98	0						
	95	0						
	90	1	325		162		163	
	85	0						
	80	1	321		165		156	
	75	2	320	0	161	3	159	3
	70	3	318	0	159	10	159	10
	65	1	317		159		158	
	60	4	316	0	158	6	158	5
	55	3	314	0	159	2	155	2
	50	3	313	0	158	1	155	1
	45	2	311	0	155	4	156	4
	40	4	310	0	153	3	157	3
	35	0						
	30	6	306	1	153	2	152	1
	25	5	304	0	151	2	153	2
	20	4	301	0	152	3	149	3
	15	5	298	1	150	1	148	2
	10	6	294	1	147	1	147	1
	5	0						
	1	32						

Note: SD = Standard Deviation, 11/13/2017

Average and Median TOEFL Scores by College

Fall 2017		Total	Total		Listening		Reading		Writing		Speaking	
		#	Mean	Median	Mean	Median	Mean	Median	Mean	Median	Mean	Median
Total	FTIC	75	97	97	25	26	25	26	24	24	23	22
	New Graduate	1051	100	101	26	26	26	27	25	25	23	23
	Total	1126	100	101	26	26	26	27	25	25	23	23
Agriculture	FTIC	2	110	110	28	28	29	29	27	27	26	26
	New Graduate	45	92	91	24	24	24	25	23	23	21	22
	Total	47	92	91	24	24	24	25	23	23	21	22
Architecture	FTIC											
	New Graduate	62	93	92	24	24	24	24	23	23	22	22
	Total	62	93	92	24	24	24	24	23	23	22	22
Business	FTIC	3	77	81	19	18	17	18	20	19	21	22
	New Graduate	74	106	106	27	27	27	28	26	26	25	26
	Total	77	105	106	27	27	27	28	26	26	25	26
Education	FTIC	2	76	76	20	20	16	16	20	20	21	21
	New Graduate	22	92	93	23	24	25	25	22	22	22	23
	Total	24	90	91	23	23	24	25	22	22	22	22
Engineering	FTIC	62	98	98	26	27	25	26	24	24	23	23
	New Graduate	671	102	103	26	27	27	27	25	26	23	23
	Total	733	101	102	26	27	27	27	25	25	23	23
G. Bush School of Govt	FTIC											
	New Graduate	16	96	95	24	24	25	25	24	25	23	23
	Total	16	96	95	24	24	25	25	24	25	23	23
Geosciences	FTIC											
	New Graduate	16	98	99	25	26	27	27	25	25	22	23
	Total	16	98	99	25	26	27	27	25	25	22	23
Galveston	FTIC	0										
	New Graduate	4	96	95	25	27	25	27	25	25	20	21
	Total	4	96	95	25	27	25	27	25	25	20	21
Liberal Arts	FTIC	4	91	88	24	24	22	22	22	21	23	23
	New Graduate	69	93	91	23	23	25	25	23	23	22	22
	Total	73	93	91	23	23	25	25	23	22	22	22
Science	FTIC	1	112	112	30	30	30	30	29	29	23	23
	New Graduate	67	100	102	26	26	27	28	25	26	22	23
	Total	68	100	103	26	27	27	28	25	26	22	23
School of Law	FTIC	0										
	New Graduate	1	81	81	21	21	22	22	21	21	17	17
	Total	1	81	81	21	21	22	22	21	21	17	17
Veterinary Medicine	FTIC	1	96	96	28	28	22	22	24	24	22	22
	New Graduate	4	95	95	26	26	28	28	21	22	20	19
	Total	5	95	96	26	27	27	26	22	22	20	19

Prepared by DARS, 11/10/2017